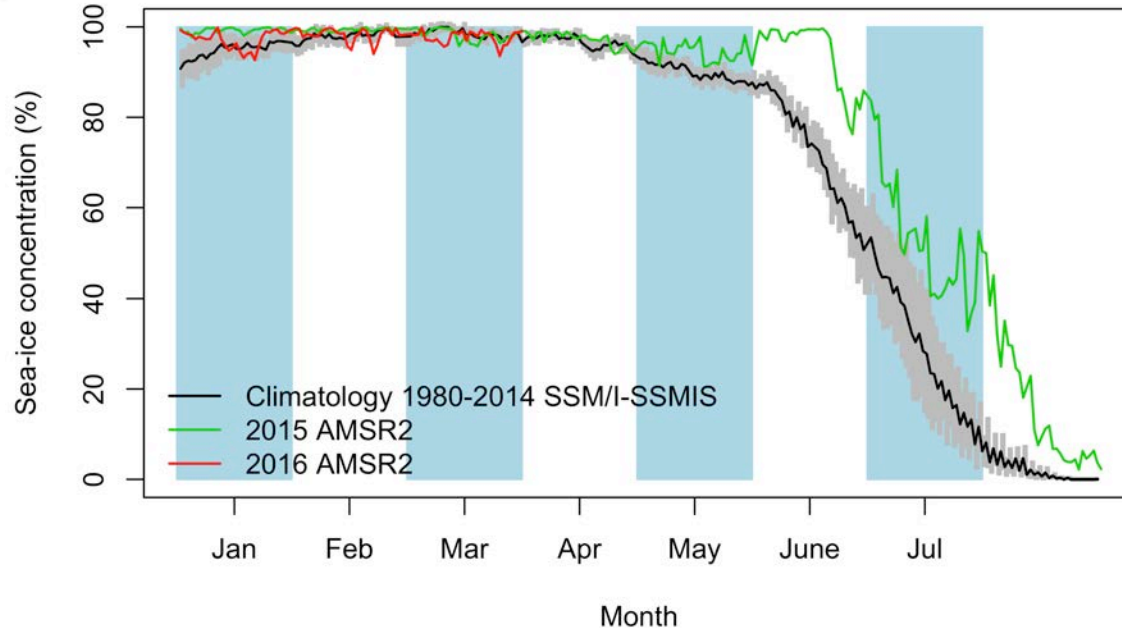
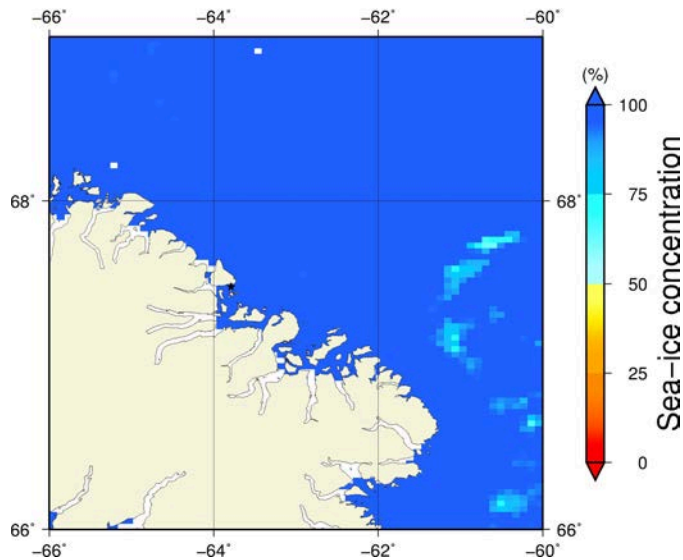


March 31st
(AMSR2)

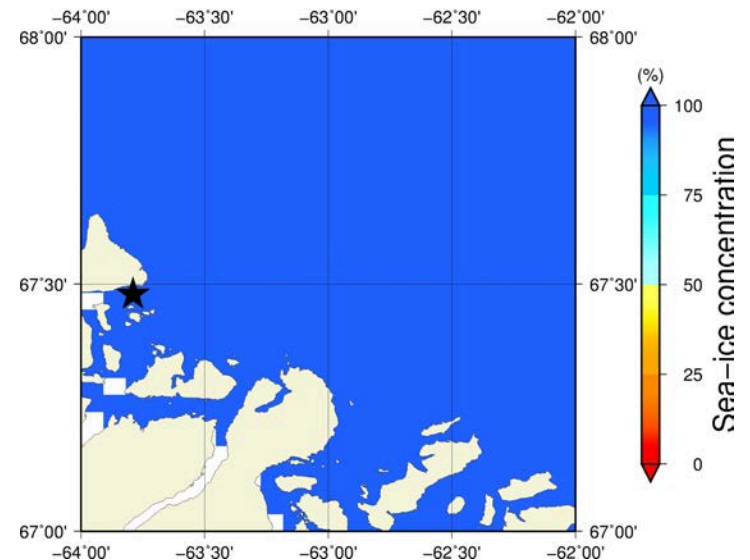
Sea-ice concentration in the region 66° to 69°N and -66° to -60°E



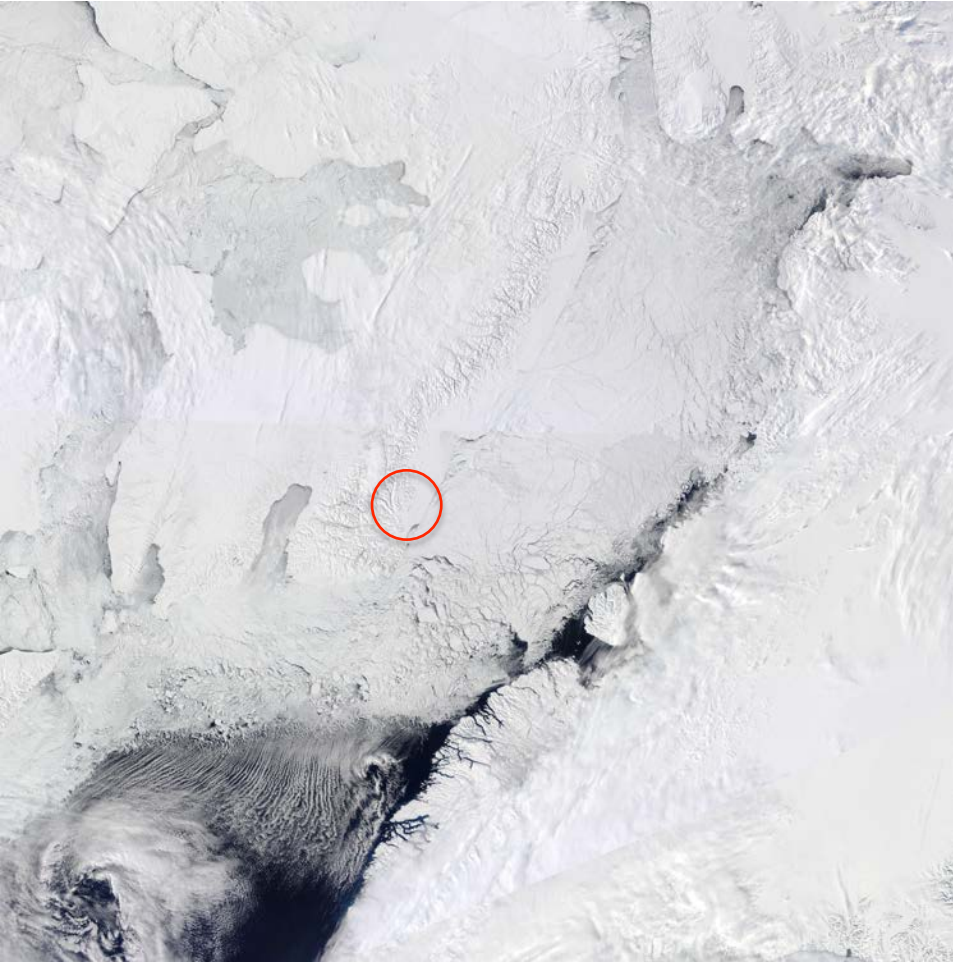
Overview



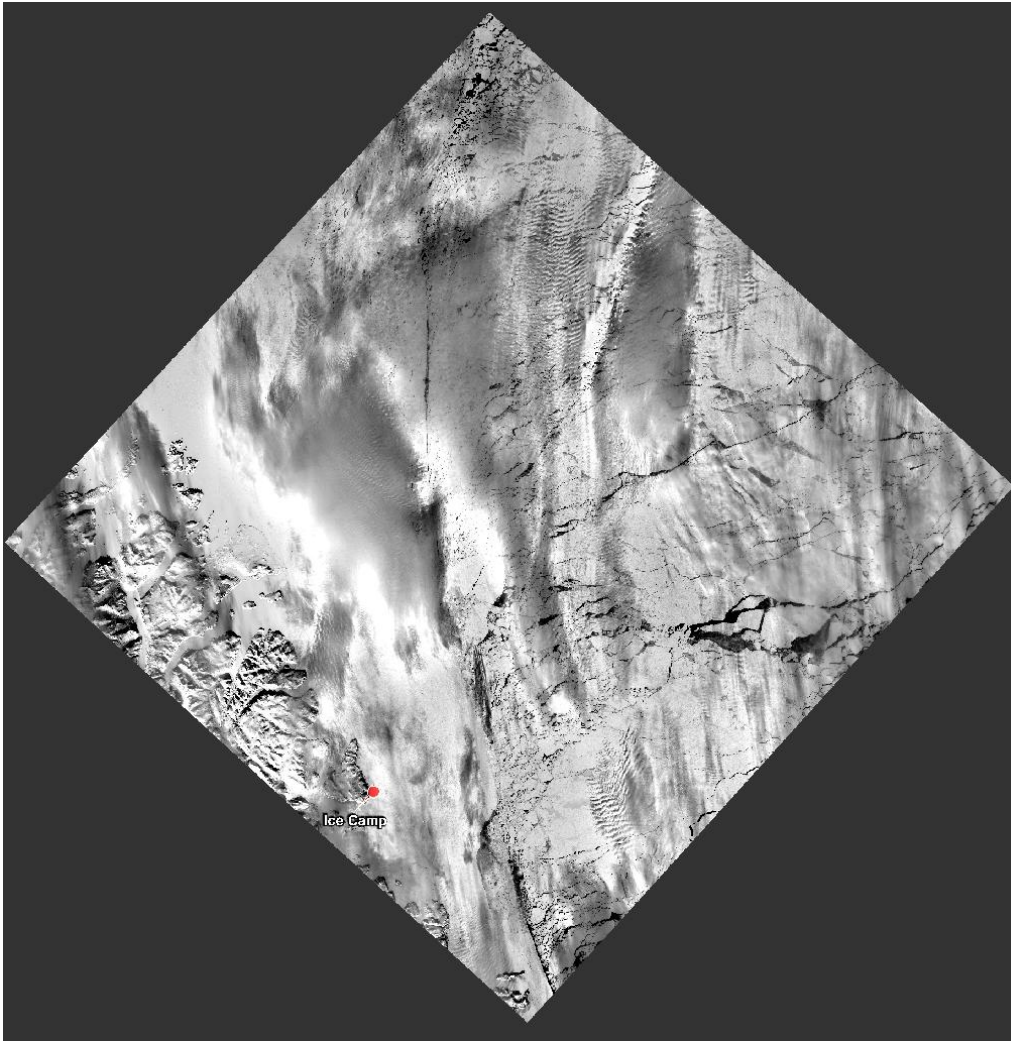
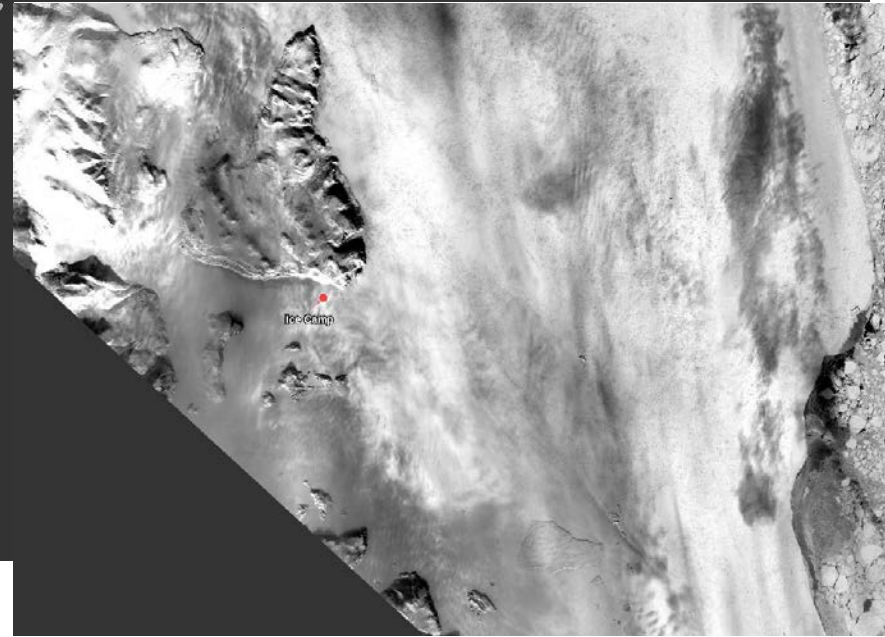
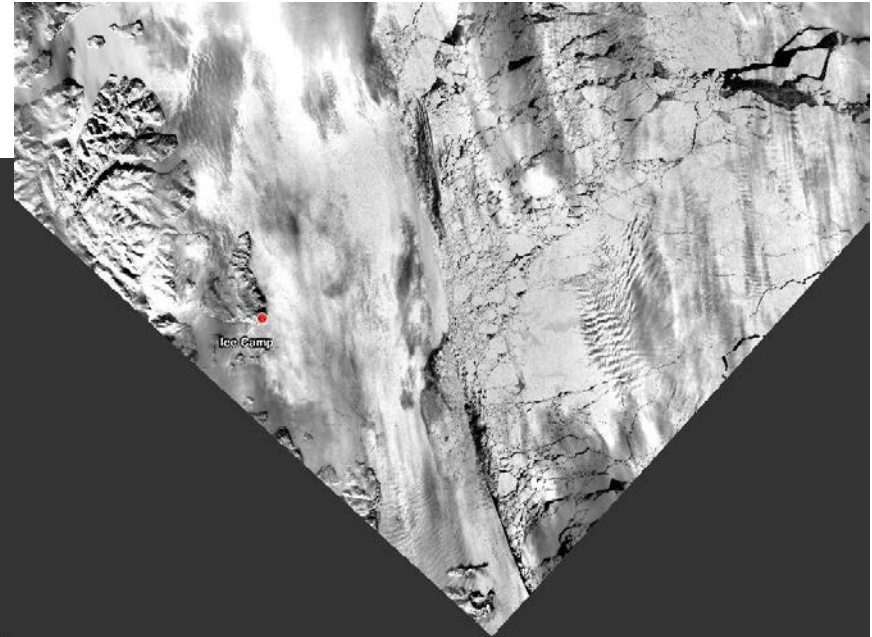
Zoom

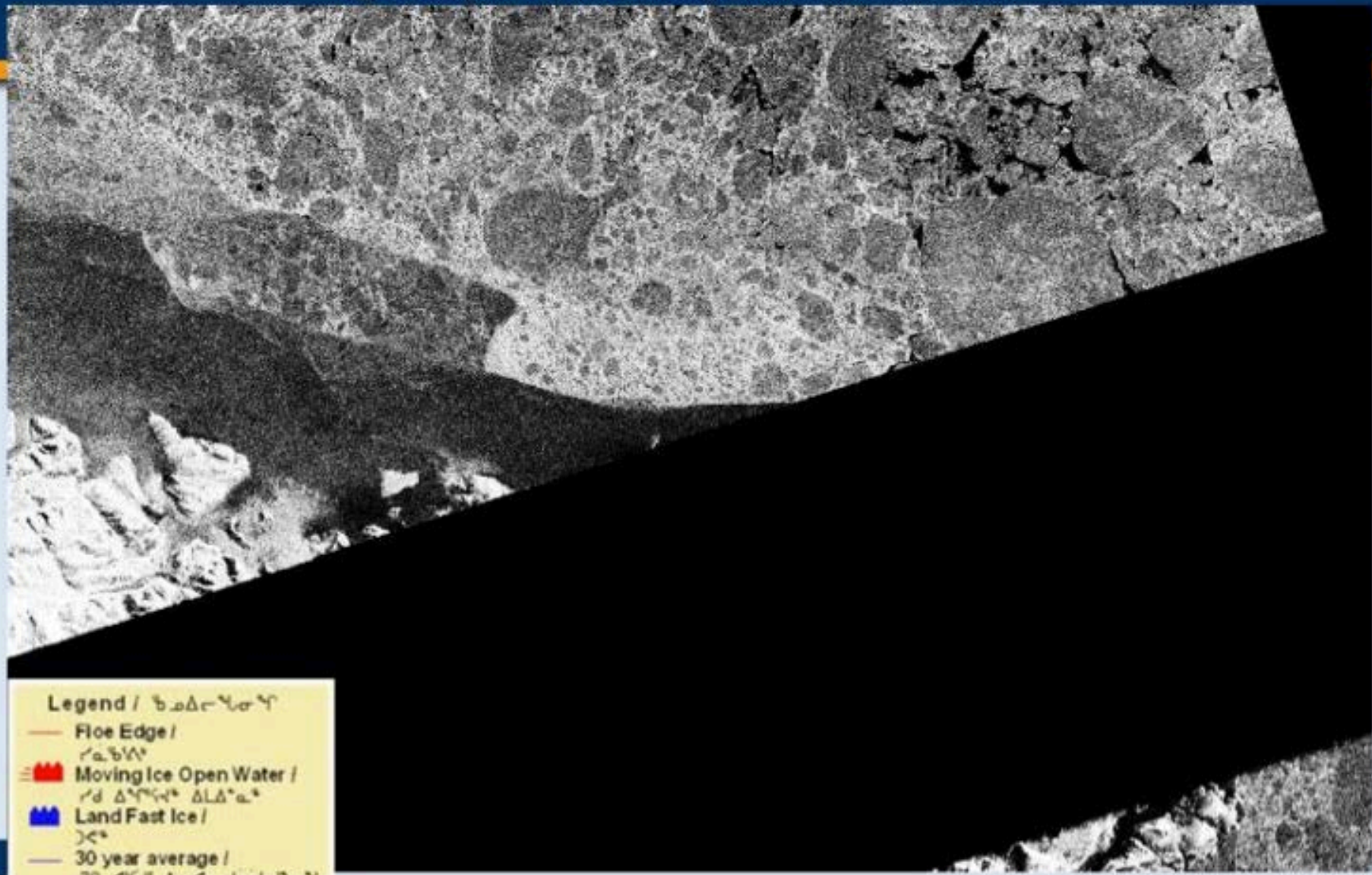


March 31st (MODIS)




March 26th (Landsat)

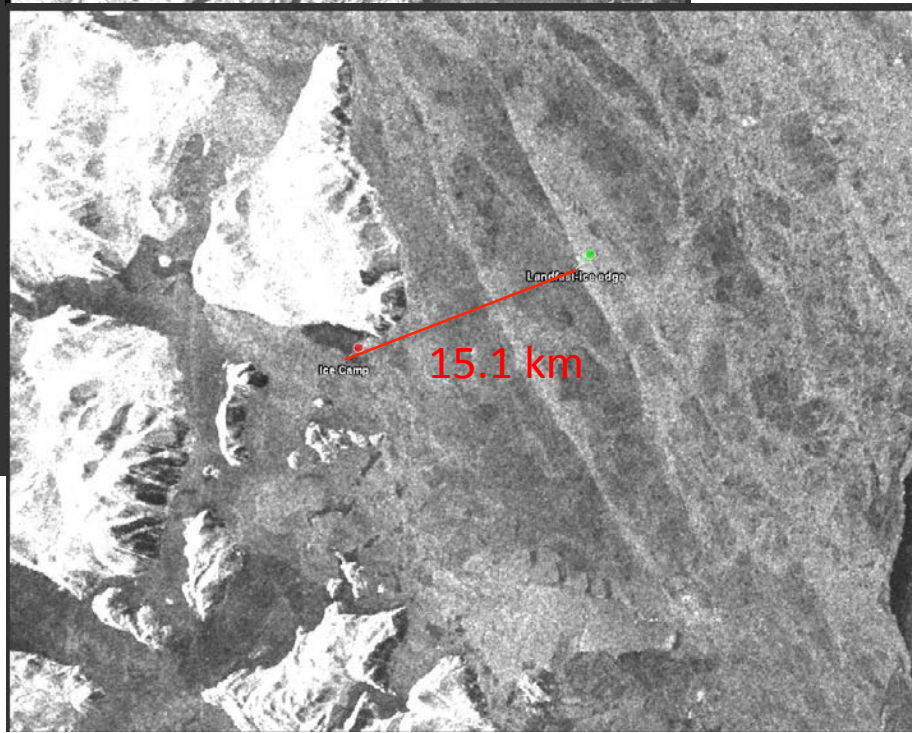
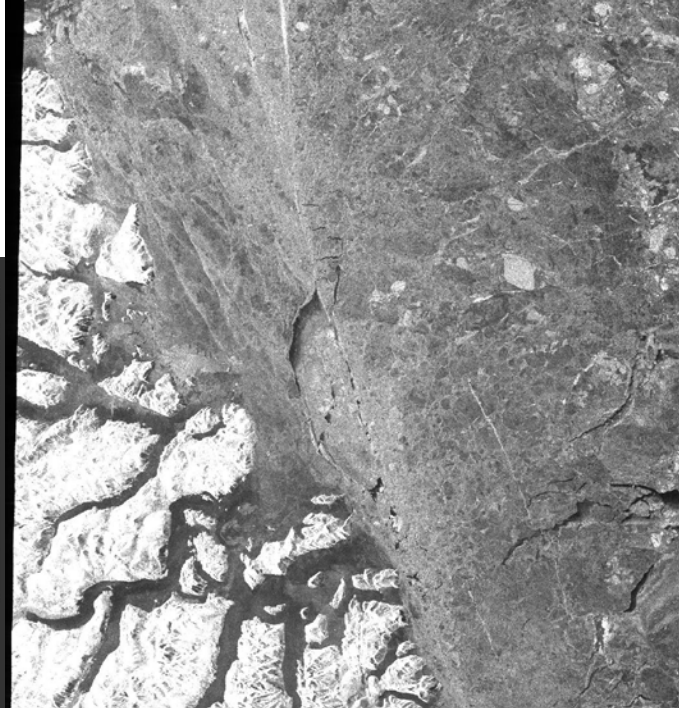
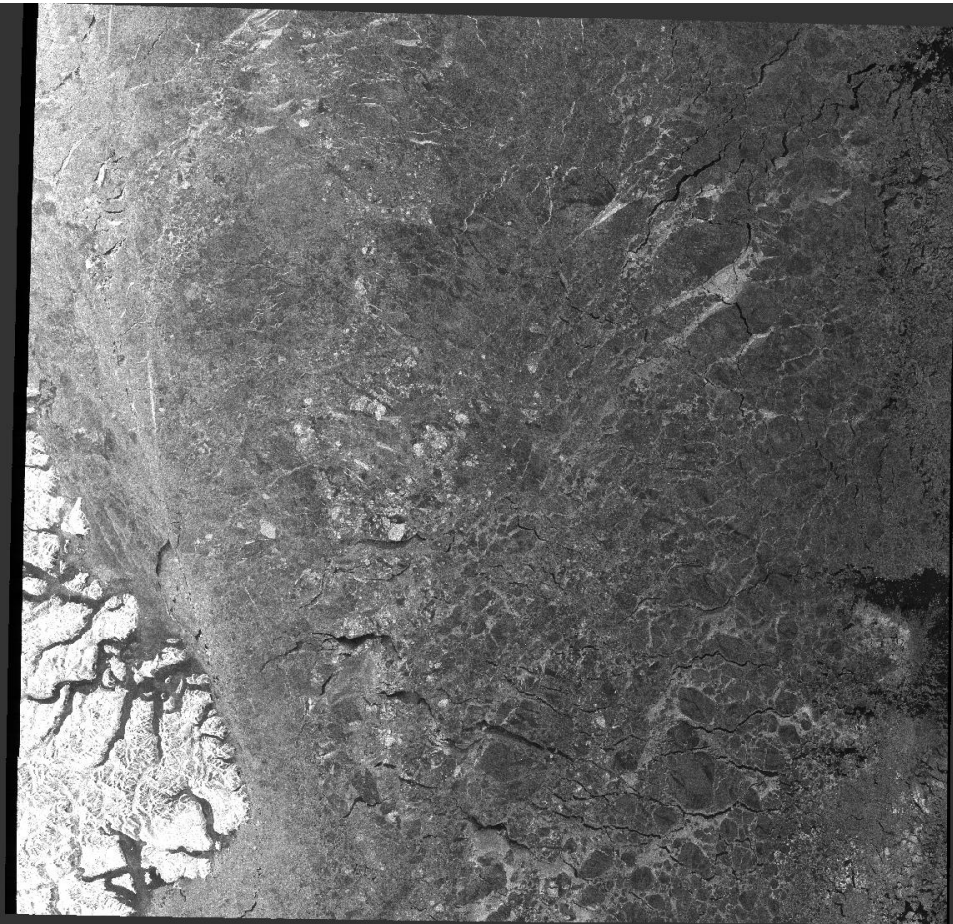




Legend / ᑲᓄᐃᓕᓴᓂᓴ

- Floe Edge / ᓴᓂᑲᓴ
-  Moving Ice Open Water / ᓴᓴ ᐃᓴᓴᓴᓴ ᐃᓴᐃᓴᓴᓴ
-  Land Fast Ice / ᓴᓴᓴ
- 30 year average / 30 ᐃᓴᓴᓴ ᐃᓴᓴᓴ ᓴᓴᓴᓴᓴᓴ

March 30th (Sentinel-1)



Sea-ice concentration

CIS Ice charts

Stage of development

