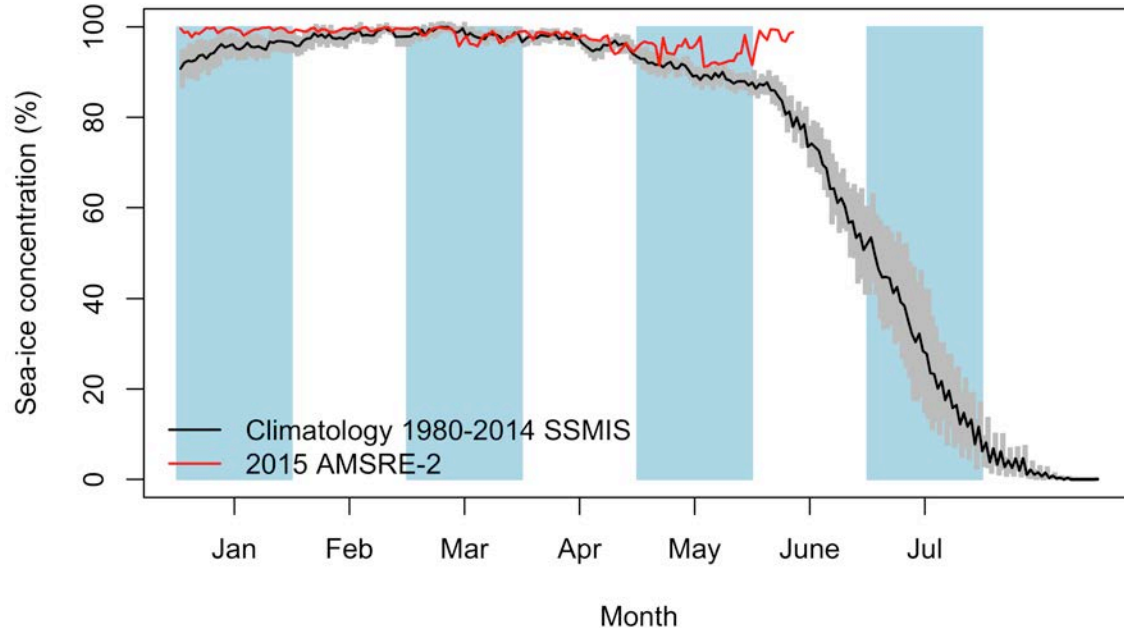
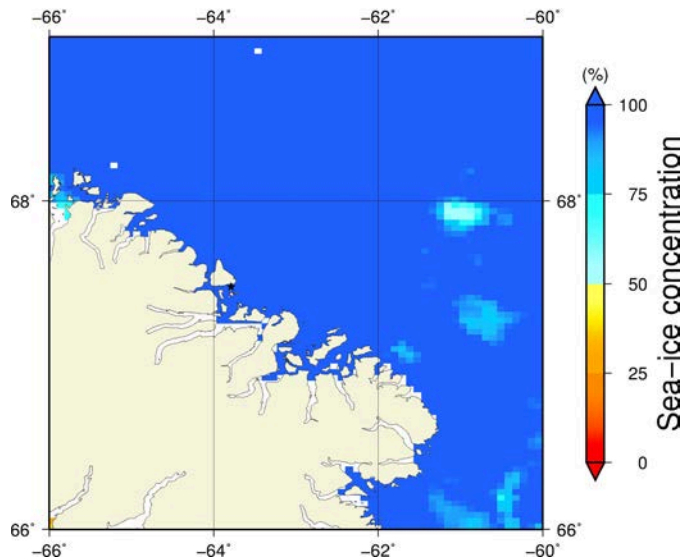


June 11<sup>th</sup> (AMSR2)

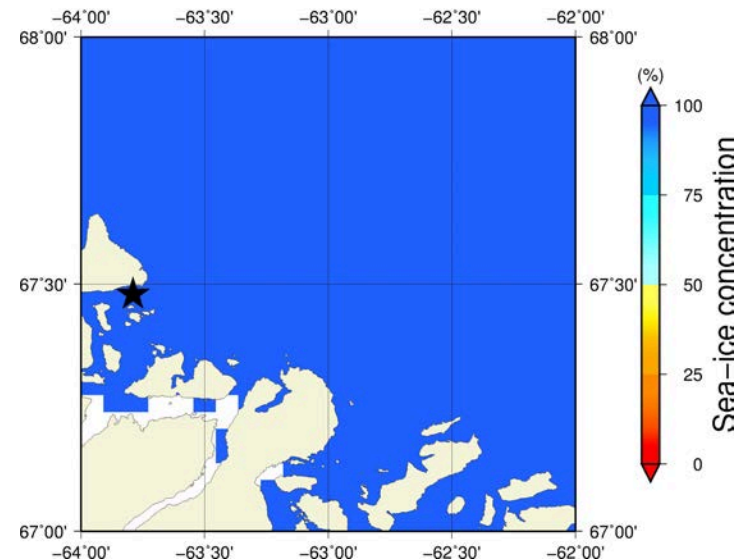
### Climatology



### Overview



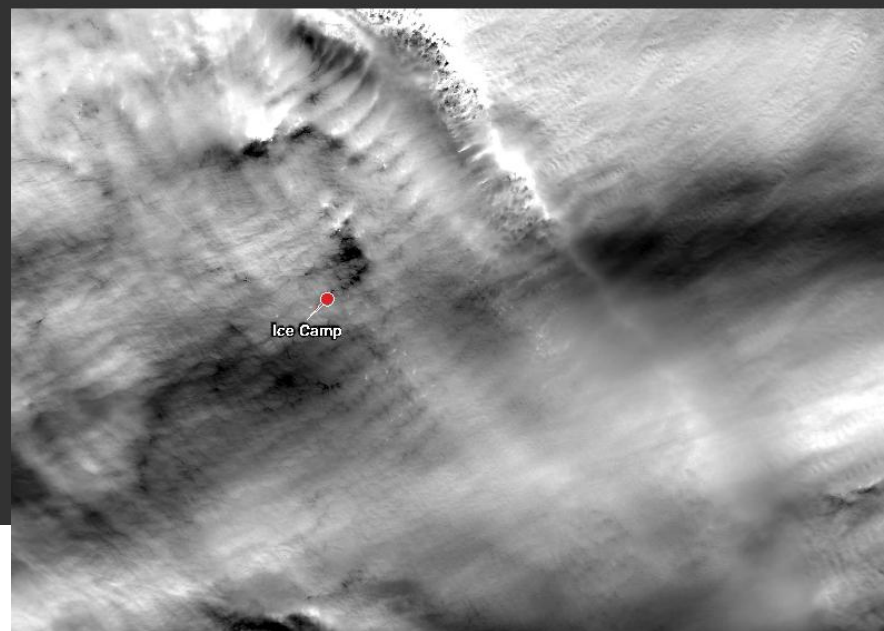
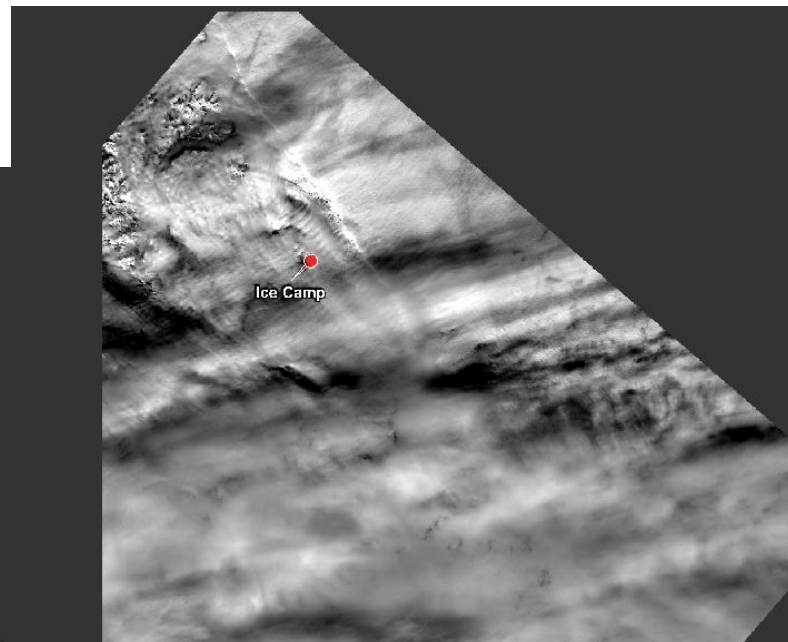
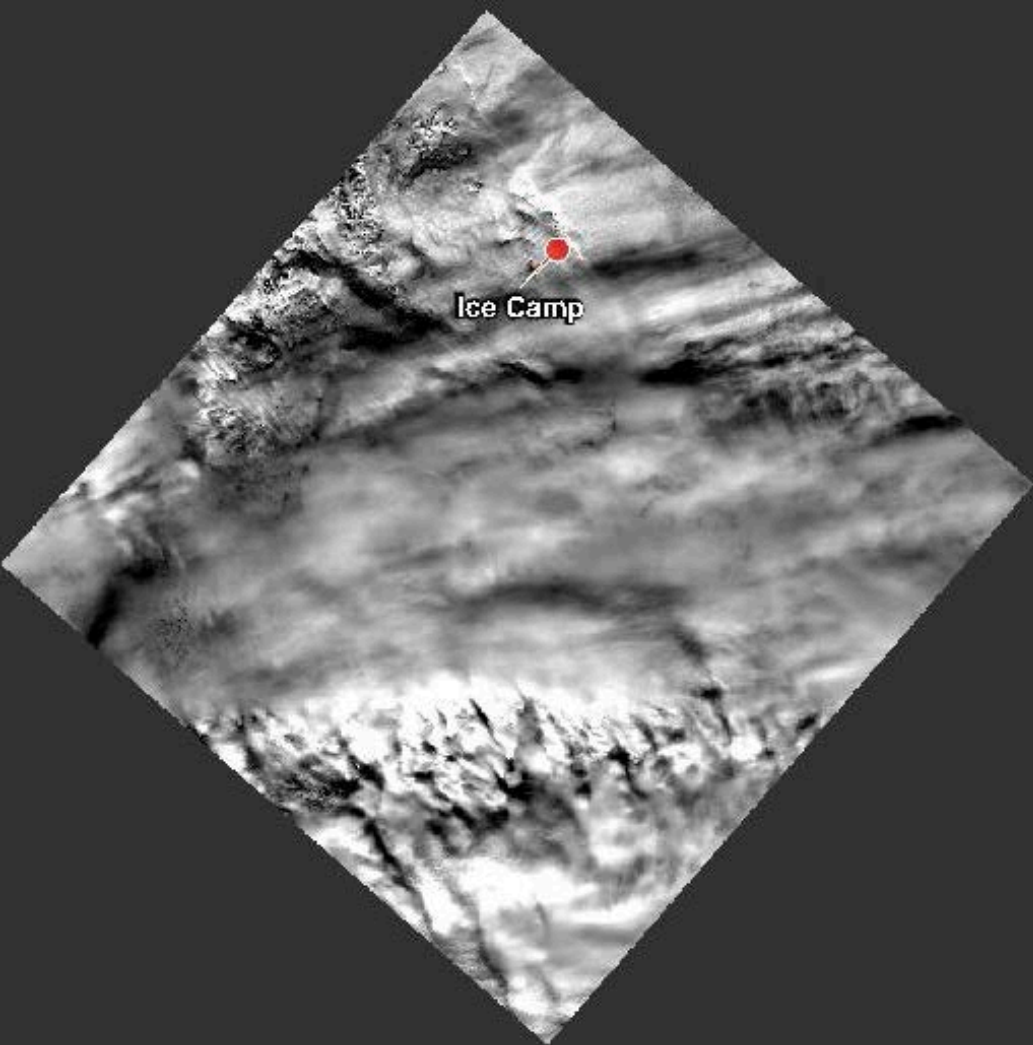
### Zoom



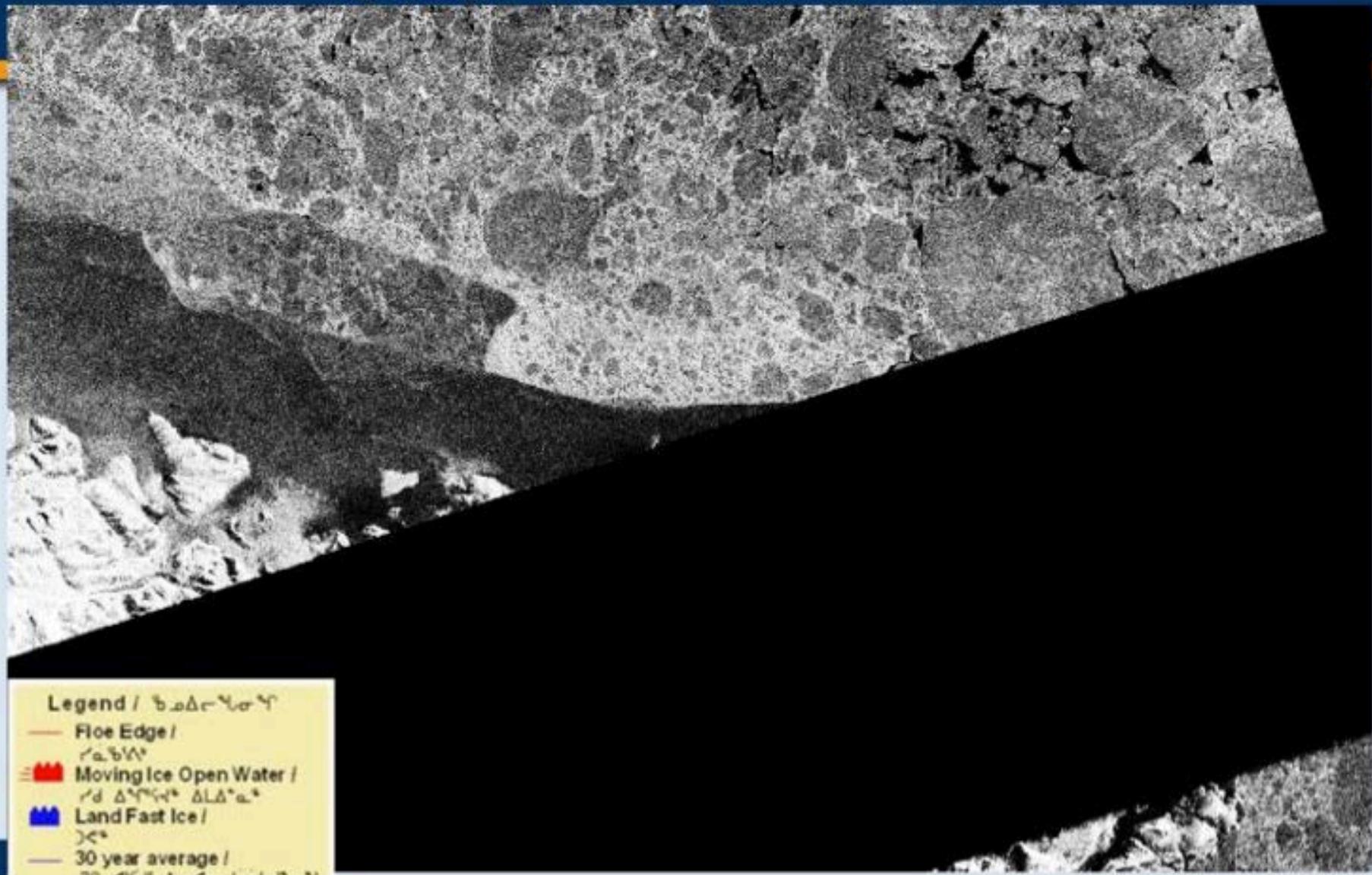
June 11<sup>th</sup> (MODIS)



June 5<sup>th</sup> (Landsat)





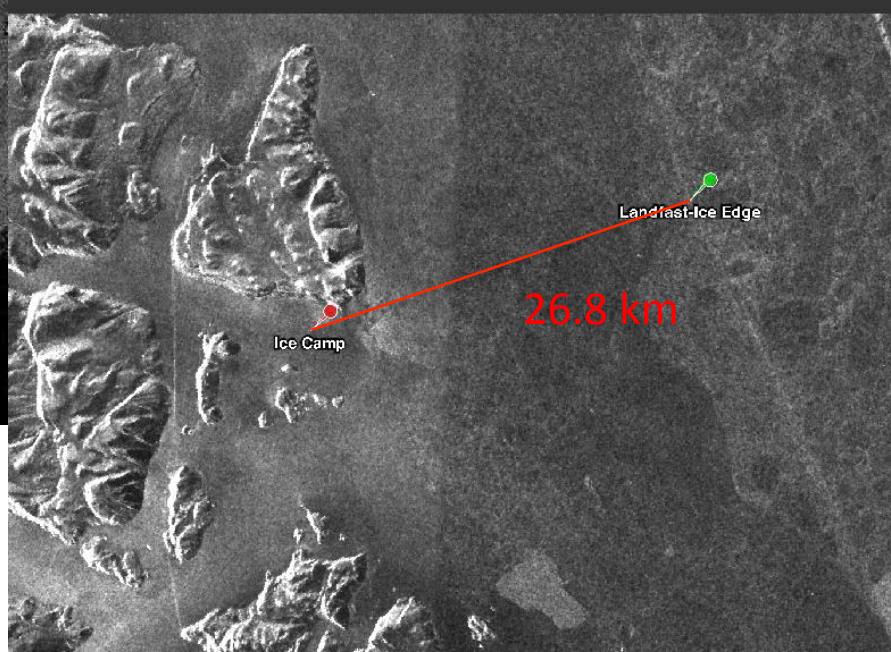
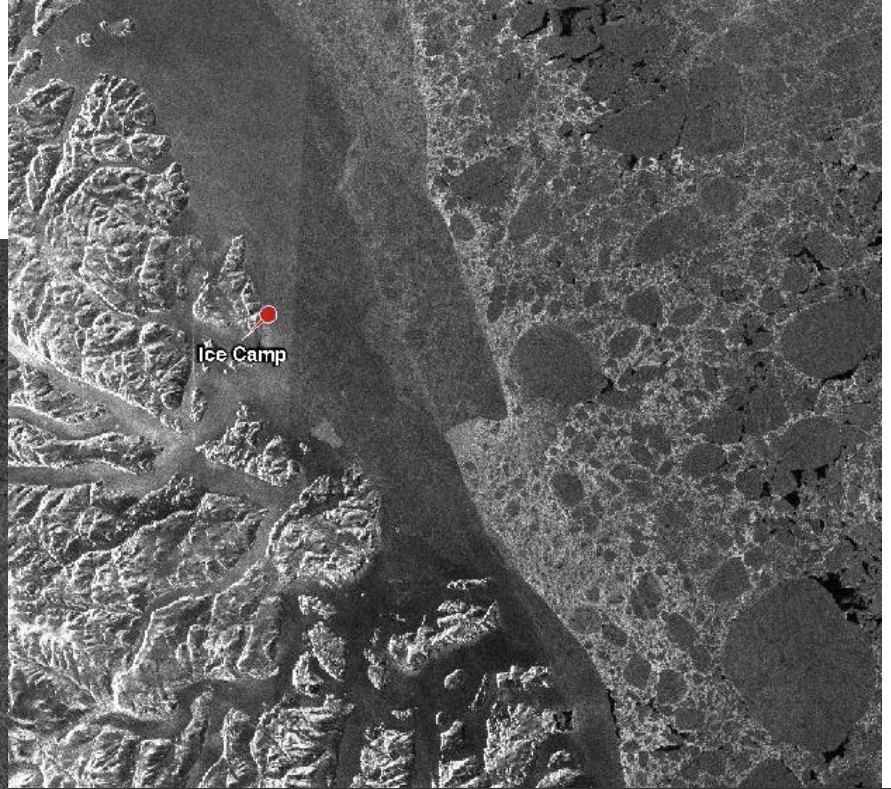


**Legend / ᑭᓄᓂᓕᓴᓂᓴ**

- Floe Edge / ᓴᓂᑭᓴ
-  Moving Ice Open Water / ᓴᓂ ᓄᓴᓴᓴᓴ ᓄᓴᓴᓴᓴ
-  Land Fast Ice / ᓴᓂᓴ
- 30 year average / 30 ᓴᓴᓴ ᓄᓴᓴᓴ ᓴᓴᓴᓴᓴᓴ



June 9<sup>th</sup> (Sentinel-1)





# Sea-ice concentration

# CIS Ice charts

# Stage of development

